

PACKING INFORMATION

- Filter Material: Inorganic, non toxic and recyclable
- Individual (hygienic) packed filters
- Transport/Export Carton (60 cm x 40 cm x 26 cm): 600 filters
- Block Pallet: 35 cartons
- Total gross weight per carton: 9,00 kg
- Total gross weight per Block Pallet 340 kg (incl. tarra)
- Please apply dry conditions for storage

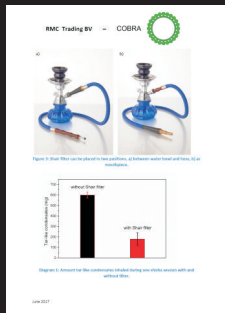
OUR REPORTS

HO Study Group on Tobacco Product Regulation

WHO Fact Sheet: Waterpipe tobacco smoking & health

RMC Trading B.V. & Cobra Technologies

Test report UL VS Limited



A HEALTHIER SMOKING WAY SOLUTION

MADE IN HOLLAND

CONTACT US

Website: www.shair-filters.com
E-mail : info@shair-filters.com



WWW.SHAIR-FILTERS.COM



HOOKAH FILTER



Shair-Filters coming with the solution

Shair-Filters is developed to reduce the intake of hazardous toxins when using a hookah or cigarette. One of the most widely spread myths about shisha smoking is that it is a healthier way of smoking compared to cigarettes and cigars. However, there are, for example, more hazardous components (in number and amounts) present in shisha smoke than in cigarette/cigar smoke. Components such as carbon monoxide, tar and amounts of heavy metals, like lead and chromium. Regular shisha use can lead to health problems such as a higher risk of various cancers and other diseases. Shair-Filters is developed by RMC Trading B.V. and Cobra Technologies B.V.

Multiple purpose tar filter designed for

- Waterpipe (Shisha, Hookah, Nargile)
- Cigarettes (incl. self rolled)
- Eliminates up to 80% tar, depending tobacco type
- Suitable for 2-4 hours waterpipe and 40 cigarettes consumption
- Does not influence the taste or the pleasure while smoking
- Considerably reducing the hazards of smoking tobacco



Healthrisk

Reduces the hazards of smoking



Quality

Eliminates up to 80% tar



Function

Designed for waterpipe consumption + cigarettes



Made in Holland

Developed, designed, tested and manufactured



Duration

2-4 hours of waterpipe consumption / 40 cigarettes



Taste

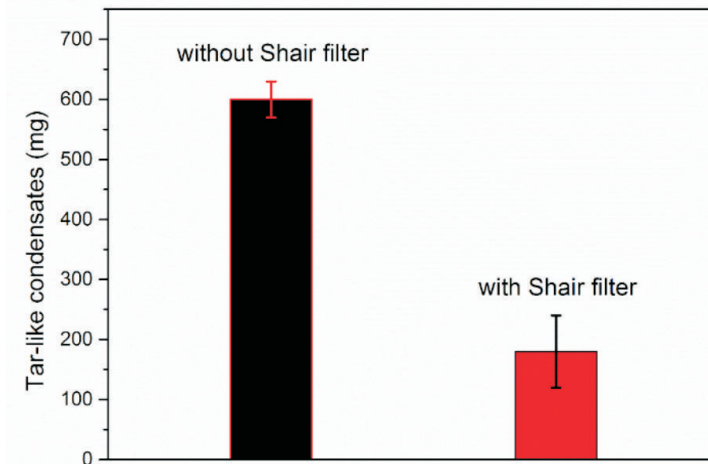
No perceptible change in taste or experience

Filter can be applied in three ways

A • Between bowl and hose



B • As a mouthpiece



Amount tar-like condensates inhaled during one Shisha session with and without filter

C • And as a holder for a cigarette

